

# OSS

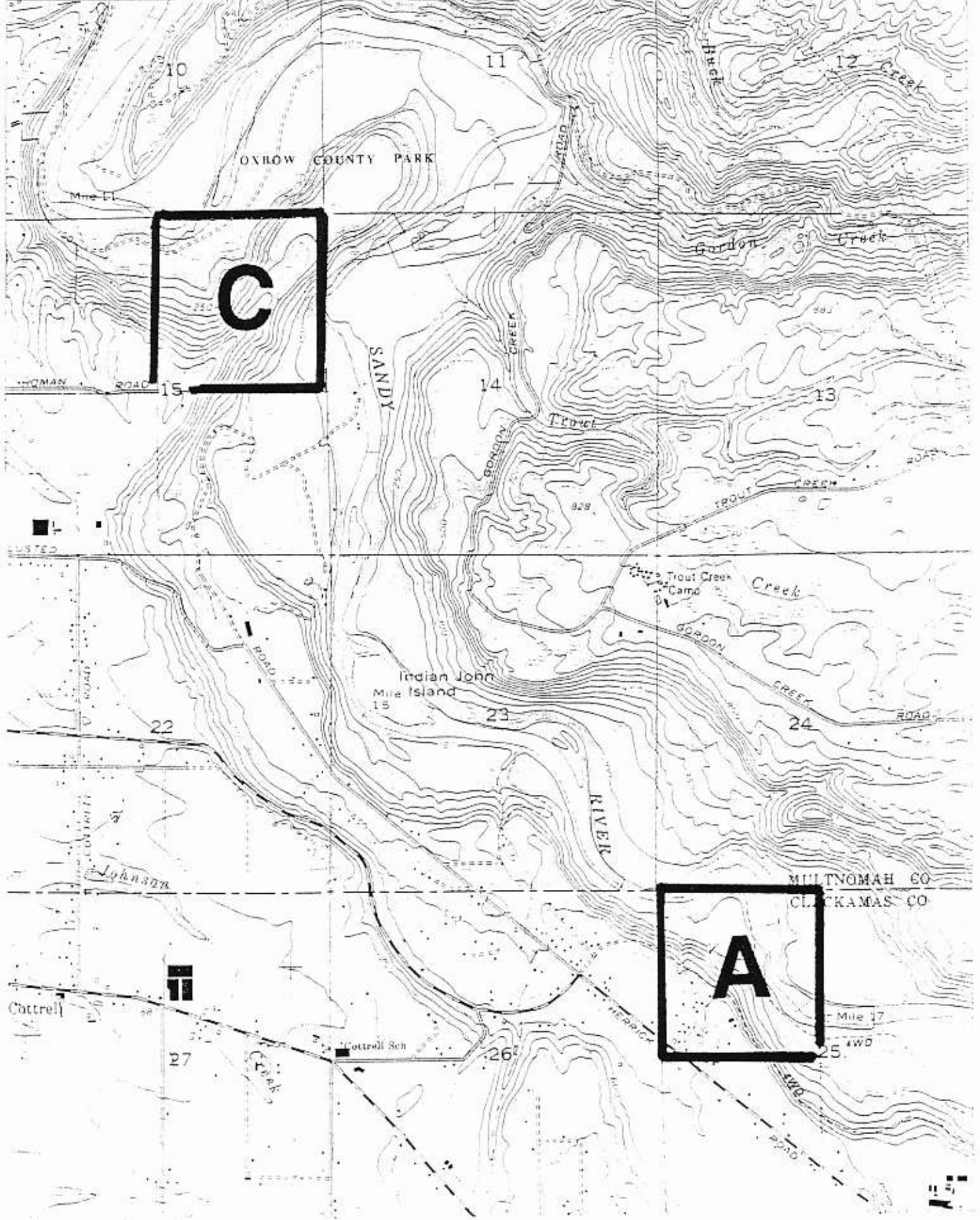
A)  $45^{\circ}27'30''N$   
 $122^{\circ}16'00''W$

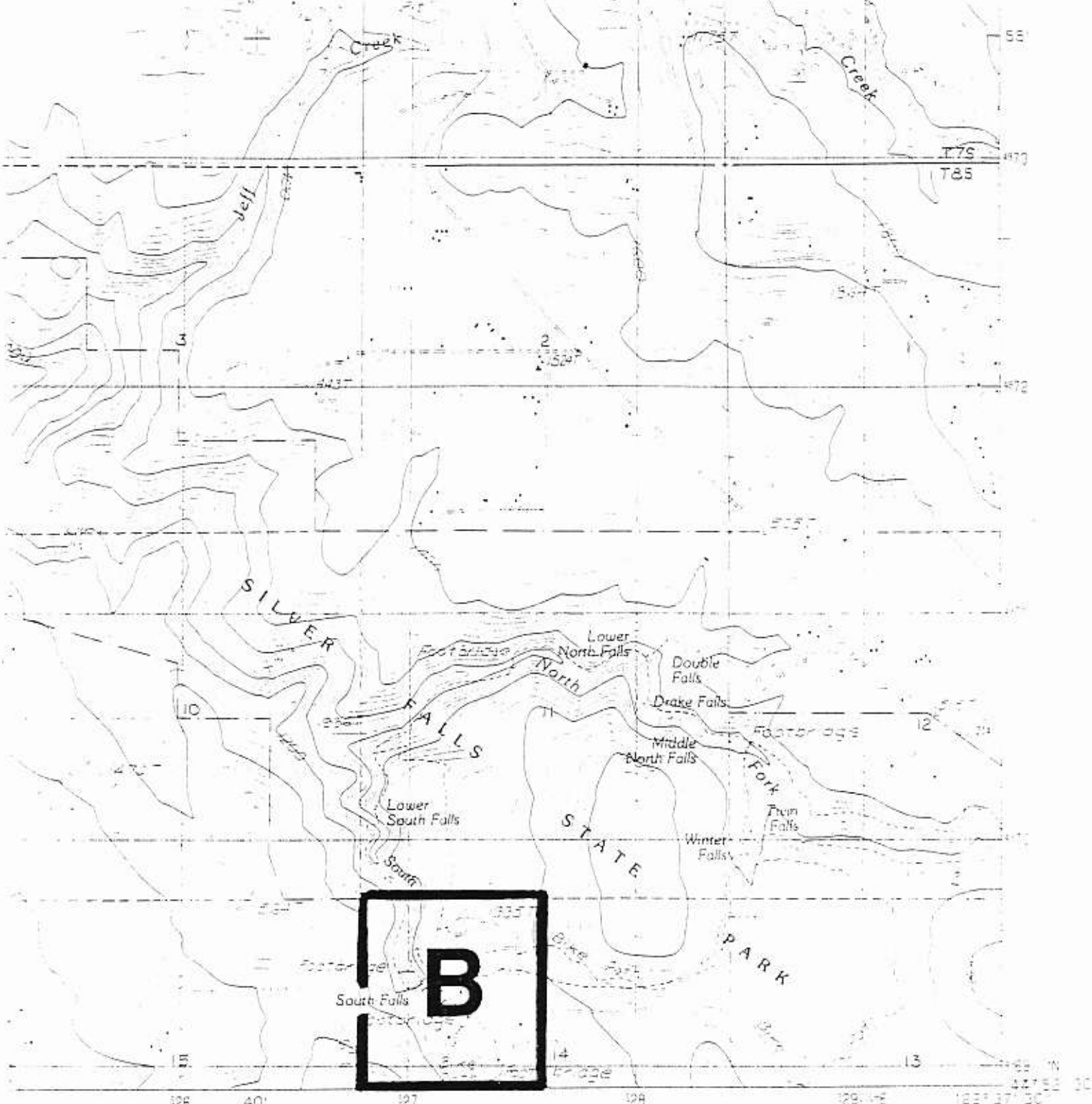
C)  $45^{\circ}29'10''N$   
 $122^{\circ}17'40''W$

SANDY QUADRANGLE  
OREGON

7.5 MINUTE SERIES (TOPOGRAPHIC)

154 155 17'30" CORBETT 3/1 MI 157 R. 4 E. 1550000 FEET 122





1	2	3	1 Silverton
			2 Scotts Mills
			3 Wilhoit
4		5	4 Stayton NE
			5 Elk Prairie
			6 Stayton
6	7	8	7 Scout Mtn.
			8 Lyons

ADJOINING 7.5 QUADRANGLE NAMES

ROAD LEGEND  $44^{\circ}52'45''N$   
 $122^{\circ}38'50''W$

- Improved Road.....
- Unimproved Road.....
- Trail.....
- Interstate Route      U.S. Route      State Route

DRAKE CROSSING, OREG.  
 PROVISIONAL EDITION 1985







1	2	3	4	5	6	7	8	9	10	11	12	13			
Date	Time	Location	Altitude	Canopy	Weather	Air Temp.	Relative Humid.	Log Orient.	Log length	Tree Circumf.	Tree Height	Log H. (approx.)	OSS	Gender	SVL
	period	/site	(GPS) (approx)	cover	condit.	(Celsius)	(approx)	(to slope)	(cm)	(inches)	(m)	(m)	Age	m-w/m-f	in mm
1	3:21	BH	310	50%	cloudy	19.9°	75-80%	VERT.	28.5	76	6.5°		raduitts	M, F	40, 42
2	3:23	OX	460	50%	rain/sun	8°	80-85%	VERT.	31.5	60	6°		raduitts	M, F	44, 45
3	4:2	SF	1495	70%	SUN	11.4°	75-80%	VERT.	32.5	42	7.4°		raduitts	M, F	28, 44
4	4:14	OX			SUN	11.3°	70-75%	VERT.	31.5	60	9.3°		raduitts	M, F	
5	4:19	BH			SUN	18.5°	75-80%	VERT.	28.5	56	9.5°		raduitts	F, F	42, 55
6	4:22	SF			SUN	18.7°	75-80%	VERT.	17.5	47	8.8°		raduitts	F, F	42, 47
7	4:28	TL	1475	60%	rain/sun	18.8°	75-80%	VERT.	17.5	47	8.8°		raduitts	F, F	
8	5:6	TL			cloudy	6.9°	75-80%	VERT.	17.5	47	7.8°		raduitts	M	34
9	5:24	OX			cloudy	18.3°	70-75%	horiz.	16.5	52	13.7°		raduitts	M, M	42, 52
10	5:24	OX			stars	18.7°	70-75%	horiz.	10.5	43	13.2°		raduitts	M, M	44, 44
11	5:28	SF			cloudy	10.1°	75%	VERT.	78	52	10.4°		raduitts	M, M	34, 44
12	5:28	SF			rain	W°	75-80%	horiz.	78	52	10.6°		raduitts	F	46

1	2	3	4	5	6	7	8	9	10	11	12	13				
Date	Time	2hr period	Location	Altitude	canopy cover	weather	Air Temp.	Relative Humid.	log Orcht. Length	log Circum.	log Temp.	log Humid.	OSS	Gender	SVL	
			site		condit.						GRADIENTS	eggs	eggs		in mm.	
1	6/3	3/4	BH A			4 sunny mild	21.2°	70%	vert.	70'	27"	14.8°	75%			
2												13.2°	80%			
3												13.5°	85%			
4	6/17	1/4	TL D			clear, calm, mild	15°	83%	horiz.	31.5'	66"	14.4°	100%			
5												14.7°	100%			
6												15.4°	110%			
7	6/17	1/4	TL D				16.4°	88%	horiz.	37'	54"	14.7°	97.5%			
8												13.8°	99%			
9												14.5°	100%			
10	6/18	1/4	TL D			clear	14.2°	84%	horiz.	31.5'	66"	14.1°	100%			
11						calm, cool						14.8°	100%			
12												14.2°	98%			
13	6/18	1/4	TL D				14.8°	84%	horiz.	37'	54"	13.9°	95%			
14												14.4°	98%			
15												14.1°	100%			
16	6/21	3/4	SF B			sunny	22°	51%	horiz.	18.5'	18"	14.1°	86.5%	adults	F, F	40.53
17						calm						14.1°	97.5%			
18	6/21	3/4	SF B			warm	20°	48%	vert.	18.2"	54"	13.5°	78%	1 sub	F	42
19												14.3°	86.5%	adult		
20	6/21	1/4	SF B			sunny	21°	61%	horiz.	12.5'	18"	14.1°	97.5%			
21						calm, mild	19°	68%	vert.	18.2"	54"	14.1°	100%			
22	6/21	1/4	SF B									13.9°	94%			
23												13.4°	95%	3 ad sub	F, F, M	34
24	6/23	1/4	OX C			overcast	14.2°	80%	vert.	6'	15"	12.4°	95%	3 ad sub	F, F, M	34
25						calm						12.4°	95%			
26	6/23	1/4	OX C			cool	14.2°	82%	horiz.	50'	60"	12.7°	100%	1 hatch.	sex	18
27												13.2°	96%	undet.		
28												12.6°	100%			
29	7/2	3/4	BR O2 B			cloudy	17°	61%	stump	16'	13 feet	12.1°	110%	1 adult	F	44
30	7/23	1/4	SF B			sunny	16.8°	94%	vert.	16'	24"	12.1°	95%	1 juvenile	F	28
31												12.8°	96%			

30  
31  
32  
33  
34  
35  
36  
37  
38  
39  
40